

**Triton supplied:**

TT Super Admix (to 450m<sup>3</sup> concrete),  
TT Waterstop, TT Swellseal Mastic



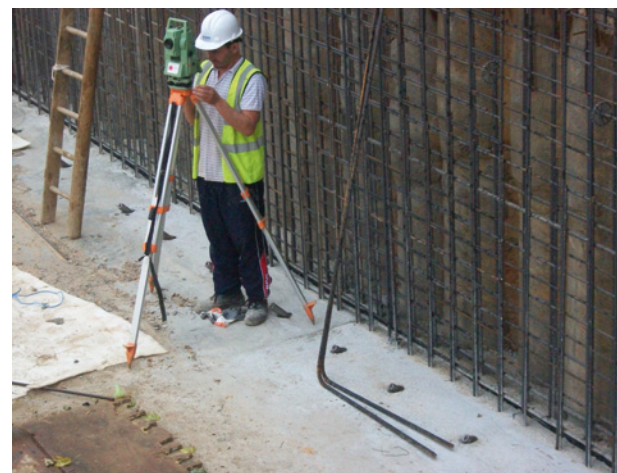
*Pouring the watertight basement floor slab.*

### **WATERTIGHT PARKING UNDER LUXURY DEVELOPMENT**

This North West London development comprises seven luxurious new build apartments, finished to the highest specification. The large basement will accommodate residents' car parking, maintenance offices and plant rooms.

The basement was constructed by Togher Construction Ltd (TCL) using 450 m<sup>3</sup> of concrete waterproofed by the inclusion of Triton's TT Super Admix (Type B waterproofing as defined by BS 8102 2009) and Triton's associated construction joint sealing products.

Triton's TT Super Admix was added to the mix at a ratio of 4.1Kg per m<sup>3</sup> of concrete with a minimum cement content of 350Kg per m<sup>3</sup> of concrete (C35 type concrete). Triton TT Waterstop was set in to pre-formed recesses within all construction joints/interfaces and subsequently filled with Triton's TT Swellseal Mastic to prevent ground water entering the structure at these vulnerable points.



*TT Swellseal Mastic and TT Waterstop applied to preformed recess within slab ready to accept concrete basement liner wall.*

The active chemicals in Triton TT Super Admix react with free lime within fresh concrete to generate a non-soluble crystalline formation which seals the concrete against the penetration of water or liquid, protecting it and the steelwork within, from deterioration and carbonisation.

Triton TT Waterstop is a pre-formed waterstop/waterbar supplied in a ready to use roll. When fully encapsulated by poured concrete, the expansive forces form a seal against the concrete surfaces to resist hydrostatic pressure and to stop water from entering the sub-structures. It is capable of swelling up to 700% of its original size! TT Waterstop returns to its original size if the concrete is completely dry but re-expands to seal potential leaking joints when water or moisture is re-introduced.

Triton Swellseal Mastic is a gun applied single-component hydro-reactive expansion sealant for waterproofing joints in concrete. It will swell up to 100% when in contact with water and offers long lasting adhesive and hydro-swelling properties.

Sourcing all the components for a watertight concrete system from the same supplier offers significant benefits to all parties, most notably it avoids the split responsibility and compatibility issues often encountered when waterproofing system components are sourced from multiple suppliers.

**Reinforced concrete frame suppliers: Togher Construction Ltd**  
[www.tclonline.co.uk](http://www.tclonline.co.uk)

**Concrete supplied by: Procon Readymix**  
[www.proconreadymix.co.uk](http://www.proconreadymix.co.uk)



*The initial dig stage of this large scale basement project*



*Concrete supplied to site by Procon Readymix*

Triton Chemical Manufacturing Co. Ltd.  
Unit 5, Lyndean Industrial Estate, Abbey Wood, London SE2 9SG

Tel: 020 8310 3929  
Fax: 020 8312 0349  
Email: [info@triton-chemicals.com](mailto:info@triton-chemicals.com)

[www.triton-chemicals.com](http://www.triton-chemicals.com)